

INSTALLATION INSTRUCTIONS

Neoma LED Picture Light

PIC-3-12/PIC-3-24

Huxe

CAUTION: To prevent electrical shock, ensure electricity has been turned off at the circuit breaker before beginning.

- Read all instructions before installing.
- System is intended for installation by a licensed electrician in accordance with the National Electrical Code (NEC) and local regulations.
- When handling the fixture, do not apply pressure to the LEDs. Hold the fixture by the base only.
- Retain installation instructions for future maintenance reference.

WARNING: All parts must be used as indicated in these instructions. This product is designed for use only with the supplied parts and/or accessories designated for use by Lumens. Substitution of parts or accessories not designated for use with this product by Lumens could result in personal injury or property damage, and will void the warranty. Contact an authorized dealer or the manufacturer if any parts are damaged or missing.

MAINTENANCE NOTE: Coastal conditions may cause mineral and residue build-up on the fixture. We recommend that customers in coastal areas clean all external surfaces of the fixture once every two weeks with a wet cloth.

MISE EN GARDE: Pour éviter tout choc électrique, assurez-vous que le disjoncteur soit mis hors tension avant de commencer.

- Lisez toutes les instructions avant l'installation.
- Le système doit être installé par un électricien licencié conformément au code national de l'électricité (NEC), et également aux règlements locaux.
- Lors de la manipulation du luminaire, n'appuyez pas sur les LED. Tenez-le uniquement par la base.

ATTENTION: Toutes les pièces doivent être utilisées comme indiqué dans ces instructions. Ce produit est conçu pour être utilisé seulement avec les pièces et/ou accessoires fournis pour être utilisés avec les produits Lumens. Remplacer des pièces ou accessoires non conçus pour ce produit Lumens pourrait causer des dommages corporels ou matériels et pourrait également causer l'annulation de la garantie. Veuillez contacter un revendeur autorisé ou le fabricant si des pièces manquent ou sont endommagées.

NOTE D'ENTRETIEN: Les conditions côtières peut causer une accumulation de minéraux et de résidus sur le luminaire. Nous recommandons aux clients qui résident dans les zones côtières de nettoyer toutes les surfaces externes du luminaire une fois toutes les deux semaines avec un chiffon humide.

HARDWARE

A



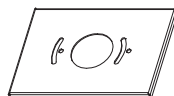
Mounting Screw
Qty: 1 Extra

B



Spherical Nut
Qty: 1 Extra

C



Conversion Plate
Qty: 1 Extra

D



Mounting Ring
Qty: 1 Extra

INSTALLATION INSTRUCTIONS

Neoma LED Picture Light

PIC-3-12/PIC-3-24

Huxe

Fig. 1 MOUNT ON SWITCH BOX

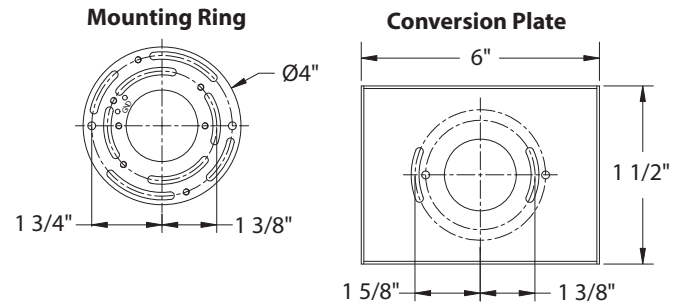
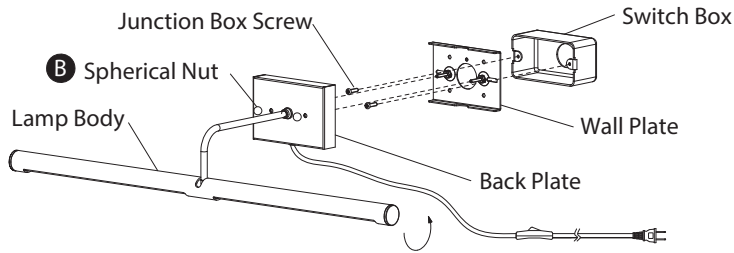
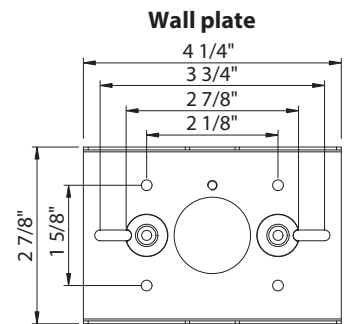
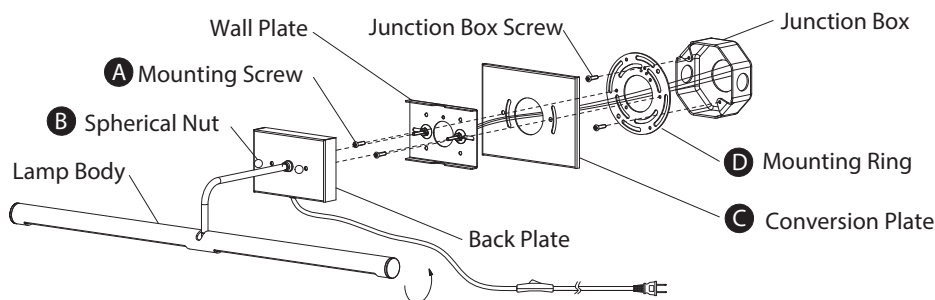


Fig. 2 MOUNT ON JUNCTION BOX



PREPARATION

1. Shut off the power at the circuit breaker and remove existing fixture, including the crossbar.
2. Carefully unpack your new fixture and lay out all the parts on a clear area. Be careful not to lose any small parts necessary for installation.

MOUNTING THE FIXTURE

MOUNT ON SWITCH BOX (Fig. 1)

3. Remove the spherical nut (B) from the wall plate.
4. Secure the wall plate to the junction box using the screws provided with the switch box.
Note: (i) It is recommended to use only original junction box screws or replacements provided by junction box manufacturer.
(ii) The side of the wall plate marked "GND" must face out towards the installer.
5. Mount the fixture against the wall plate and secure using the spherical nut (B).

OR

MOUNT ON JUNCTION BOX (Fig. 2)

3. Remove the spherical nut (B) from the wall plate.
4. Secure the mounting ring (D) to the junction box using the screws provided with the junction box.
Note: (i) It is recommended to use only original junction box screws or replacements provided by junction box manufacturer.
(ii) The side of the wall plate marked "GND" must face out towards the installer.
5. Secure the wall plate and conversion plate (C) to the mounting ring (D) with assembly screw (A).
6. Mount the fixture against the wall plate and secure using the spherical nut (B).

IMPORTANT SAFETY INSTRUCTIONS

This portable lamp has a polarized plug (one blade is wider than the other) as a safety feature to reduce the risk of electric shock. This plug will fit a polarized outlet only one way. If the plug does not fit fully in the outlet, reverse the plug. If it still does not fit, contact a qualified electrician. Never use an extension cord unless the plug can be fully inserted. Do not change or alter the plug.

本页仅用于版本控制，请勿印刷！

序号 No.	变更说明 REVISION NOTE	变更人 CHANGED BY	变更日期 REV DATE
1			
2			
3			
4			
5			

料号：7DDB001337

设计：李伟 12/25/2024
DESIGN:

规格：80 克进口书写纸 A4，双面印刷，短边对折
SPECIFICATION:80G IMPORTED WRITING PAPER A4, DOUBLE-SIDED
PRINTING, THE SHORT SIDE FOLDED IN HALF
审核：王杰 12/25/2024
CHECK:

标准化：罗绍月 12/25/2024
STD BY:

图号：PIC324-14 A
DWG NO.
批准：常心 12/25/2024
APPROVED BY: